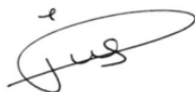


Customer :

**ADRIENNE FELLER COSMETICS ZRT.****5126 Jaszfenyszaru  
Albert Einstein ut 3.  
HUNGARY****Sample Nature :** ESSENTIAL OIL**Botanical name :** MELALEUCA ALTERNIFOLIA**Sample name :** MELALEUCA ALTERNIFOLIA**Batch number :** B008620**Origin :** -**Plant part :** LEAF**Our reference :** HY88**Receipt :** 20/07/2022**Analysis date :** 01/08/2022**Best Before :** 31/12/2025**Packaging :** Amber flask of 10 ml**Requested analysis :** GChe IP**Sample storage :** 1 year - room temperature*The above information is provided by the customer and sampling is under his responsibility***Comments :**

**This chromatographic profile complies with the ISO 4730 : 2017 standard  
relating to the Tea tree essential oil.**

**Report validated by :****Report written by :**

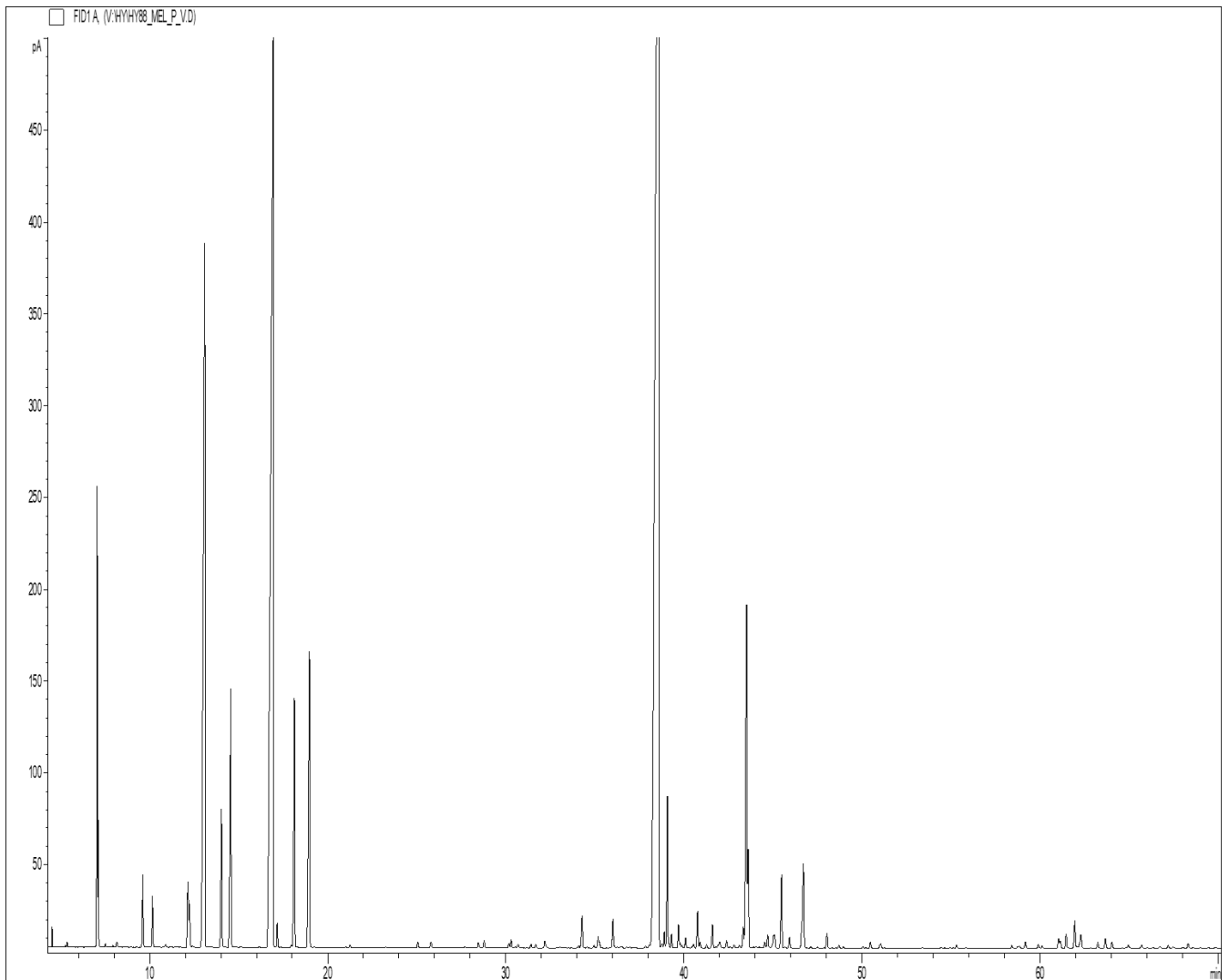
<b>PHYSICAL CHARACTERISTICS</b>			
---------------------------------	--	--	--

	REFERENCE METHOD	VALUES	NORM	
			Minimum	Maximum
Peroxide value	ISO 18321 & 3960	<b>36.8 meq O2/ kg</b>		
		<b>16.5 mmol O2/l</b>		

<b>GAS CHROMATOGRAPHY (according to the norm NF ISO 11024)</b>
--

**Analysis conditions :**

- . GC/MS Agilent 6890 / 5973 (Green) - Column : VF WAX (polar) 60 m \* 0.25 mm \* 0.25 µm
- . GC/FID Agilent 6890 – Column : VF WAX (polar) 60 m \* 0.25 mm \* 0.25 µm
- . Temperature program : (2S) 10 min to 60°C - 2°C/min until 250°C - 15 min to 250°C
- . Sample injection / split : 1 µl of 10 % solution in hexane
- . Mass range : 30 to 350 - Oil compounds are identified by a combination of retention times and mass spectra library (our own database and NIST commercial database).
- . Percentages are calculated from GC/FID peaks areas without using corrections factors.
- . Peaks investigation limit : 0.01 % Peaks integration limit : 0.01 %

**Chromatographic profile :**

**Identification results : MELALEUCA ALTERNIFOLIA - BATCH N° B008620**

Peaks	RT (min)	Compound name	%	Norm (%)	Allergens (%)
1	5.36	ETHANOL	0.03		
2	7.05	<b>alpha-PINENE</b>	<b>2.74</b>	<b>1 - 4</b>	
3	7.12	alpha-THUYENE	0.65		
4	7.52	p-MENTHANE	0.02		
5	7.94	alpha-FENCHENE	0.01		
6	8.15	p-MENTH-3-ENE	0.03		
7	8.18	CAMPHERE	0.02		
8	9.60	beta-PINENE	0.57		
9	10.15	<b>SABINENE</b>	<b>0.41</b>	<b>&lt; 3.5</b>	
10	10.89	p-MENTH-2-ENE	0.03		
11	12.14	beta-MYRCENE	0.60		
12	12.22	alpha-PHELLANDRENE	0.37		
13	12.40	psi-LIMONENE	0.01		
14	13.09	<b>alpha-TERPINENE</b>	<b>10.05</b>	<b>6 - 12</b>	
15	14.02	<b>LIMONENE</b>	<b>1.26</b>	<b>0.5 - 1.5</b>	1.26
16	14.54	<b>1,8-CINEOLE</b>	<b>1.86</b>	<b>&lt; 10.0</b>	
17	14.59	beta-PHELLANDRENE	0.57		
18	16.93	<b>gamma-TERPINENE</b>	<b>20.25</b>	<b>14 - 28</b>	
19	17.16	trans-beta-OCIMENE	0.19		
20	17.95	3,8-p-MENTHADIENE	0.02		
21	18.12	<b>p-CYMENE</b>	<b>2.36</b>	<b>0.5 - 8.0</b>	
22	18.97	<b>TERPINOLENE</b>	<b>3.31</b>	<b>1.5 - 5.0</b>	
23	19.23	TERPINOLENE ISOMER	0.01		
24	21.25	PINOL	0.03		
25	25.06	3-HEXEN-1-OL	0.06		
26	25.80	FENCHONE	0.06		
27	28.47	alpha,p-DIMETHYLSTYRENE	0.06		
28	28.79	LINALOOL cis-OXIDE	0.07		
29	30.18	alpha-CUBEBENE	0.04		
30	30.31	trans-THUYANOL	0.07		
31	30.53	SESQUITERPENE	0.01		
32	30.71	ISOLONGIFOLENE	0.04		
33	31.43	TERPENIC COMPOUND	0.04		
34	31.69	SESQUITERPENE	0.04		
35	32.21	alpha-COPAENE	0.07		
36	32.27	SESQUITERPENE	0.01		
37	33.05	DILL ETHER	0.01		
38	34.09	SESQUITERPENE	0.02		
39	34.29	alpha-GURJUNENE	0.32		
40	34.96	beta1-CUBEBENE	0.03		
41	35.19	cis-THUYANOL	0.11		
42	35.27	LINALOOL	0.05		0.05
43	36.03	trans-p-MENTH-2-EN-1-OL	0.30		
44	36.26	SESQUITERPENE	0.01		
45	36.48	TERPINENE-1-OL	0.01		
46	36.52	alpha-GUAIENE	0.02		
47	36.80	SESQUITERPENE	0.01		
48	36.97	ACID COMPOUND	0.01		
49	37.86	CALARENE ISOMER	0.02		
50	38.06	beta-CARYOPHYLLENE	0.03		
51	38.60	<b>TERPINENE-4-OL</b>	<b>40.90</b>	<b>35 - 48</b>	

## Identification results : MELALEUCA ALTERNIFOLIA - BATCH N° B008620

Peaks	RT (min)	Compound name	%	Norm (%)	Allergens (%)
52	38.77	SESQUITERPENE	0.06		
53	38.90	SESQUITERPENE	0.13		
54	39.08	<b>AROMADENDRENE</b>	<b>1.27</b>	<b>0.2 - 3.0</b>	
55	39.16	SESQUITERPENE	0.03		
56	39.30	COPACAMPHENE	0.11		
57	39.70	cis-p-MENTH-2-EN-1-OL	0.22		
58	39.80	SESQUITERPENE	0.04		
59	39.89	SESQUITERPENE	0.02		
60	40.10	CADINA-3,5-DIENE	0.09		
61	40.53	SESQUITERPENE	0.04		
62	40.77	ALLO-AROMADENDRENE	0.35		
63	40.91	SESQUITERPENE	0.06		
64	41.27	trans-PINOCARVEOL	0.03		
65	41.60	ZONARENE	0.22		
66	41.78	ESTRAGOL	0.01		
67	41.92	gamma-SELINENE	0.02		
68	42.00	alpha-HUMULENE	0.08		
69	42.39	cis-PIPERITOL	0.08		
70	42.60	TERPENIC ALCOHOL	0.02		
71	42.83	SESQUITERPENE	0.04		
72	43.11	SESQUITERPENE	0.03		
73	43.33	CALARENE ISOMER	0.21		
74	43.52	<b>alpha-TERPINEOL</b>	<b>3.83</b>	<b>2 - 5</b>	
75	43.55	gamma-TERPINEOL	0.16		
76	43.61	<b>LEDENE</b>	<b>0.84</b>	<b>0.1 - 3.0</b>	
77	43.92	BORNEOL	0.01		
78	44.04	SESQUITERPENE	0.01		
79	44.54	GERMACRENE D	0.07		
80	44.71	beta-SELINENE	0.14		
81	44.98	PIPERITONE	0.02		
82	45.05	alpha-SELINENE	0.11		
83	45.10	alpha-MUUROLENE	0.12		
84	45.49	BICYCLOGERMACRENE	0.73		
85	45.67	SESQUITERPENE	0.01		
86	45.93	trans-PIPERITOL	0.11		
87	46.64	gamma-CADINENE	0.20		
88	46.72	<b>delta-CADINENE</b>	<b>0.88</b>	<b>0.2 - 3.0</b>	
89	47.12	SESQUITERPENE Mw=202	0.02		
90	48.04	CADINA-1,4-DIENE	0.15		
91	48.71	TERPENIC COMPOUND	0.03		
92	48.95	NEROL	0.01		
93	50.05	SESQUITERPENE	0.02		
94	50.47	CALAMENENE	0.06		
95	51.02	p-CYMENE-8-OL	0.03		
96	51.05	GERANIOL	0.04		0.04
97	55.30	PALUSTROL	0.03		
98	58.42	MAALIOL	0.03		
99	58.76	SESQUITERPENOL	0.02		
100	58.85	METHYLEUGENOL	0.03		
101	59.18	Epi-GLOBULOL	0.06		
102	59.91	LEDOL	0.04		

**Identification results : MELALEUCA ALTERNIFOLIA - BATCH N° B008620**

Peaks	RT (min)	Compound name	%	Norm (%)	Allergens (%)
103	60.13	GLEENOL ISOMER	0.02		
104	61.05	GLEENOL	0.11		
105	61.14	Epi-CUBENOL	0.07		
106	61.47	CUBENOL	0.15		
107	61.96	<b>GLOBULOL</b>	<b>0.29</b>	<b>&lt; 1.0</b>	
108	62.10	KETONIC COMPOUND	0.01		
109	62.25	cis-1,2-DIHYDROXY-p-MENTH-2-ENE	0.04		
110	62.31	<b>VIRIDIFLOROL</b>	<b>0.15</b>	<b>&lt; 1.0</b>	
111	63.25	10-epi-gamma-EUDESOL	0.06		
112	63.68	ROSIFOLIOL	0.10		
113	64.04	SPATHULENOL	0.06		
114	64.95	trans-1,2-DIHYDROXY-p-MENTH-2-ENE	0.03		
115	65.71	SORBIC ACID	0.04		
116	66.74	alpha-MUUROLOL	0.02		
117	67.21	delta-CADINOL	0.03		
118	67.48	SESQUITERPENOL	0.01		
119	68.32	alpha-NOOTKATOL	0.05		
		<b>TOTAL</b>	<b>99.99</b>		<b>1.35</b>